



Avrupa Birliği  
Çevre Ödülleri



[www.hosekra-floor.com](http://www.hosekra-floor.com)



## Think with us while designing, producing and living...

When the best definition of 27 years is 'quality', your name is mentioned with great esteem; that is 'reliability'. Over the years, that reliability turns into loyalty. But loyalty removed from monotony, rather attractive and innovative; facing the sun, sure about starting the day with lots of novelties. The increase in the number of people who think with you reflects on your brand and this has a simple name: 'pride'.

In order to understand life, you need to believe that there can always be young flowers grown from one root. We have always believed in this. That's why our products have always been innovational and touched the life. The life of the ones who deserve and create more comfortable and aesthetic living spaces with every detail adhered to.

The life of the ones who consider success together with us.  
Sincerely...



AGT is the leader  
establishment of its sector.

- > The production of door, composite deck and wooden furniture components
- > A facility of 400.000 m<sup>2</sup>, equipped with high technology
- > More than 500 expert personnel
- > Investment in the future with AR-GE activities
- > ISO 9001-2008 Quality Management Accreditation
- > 50% export capacity





Production with the latest wooden technology WPC



## AGT SUNDECK

AGT SUNDECK Decorative, Long-lasting, Eco-friendly

- > Composite floor composed of wooden and polypropylene (plastic) composition
- > For garden and walking paths, pool sides, port sides, beaches, terraces and verandas
- > Produced with the latest wooden technology WPC
- > Resistant to slide, natural conditions, water, moisture and impacts
- > Suitable for production in any size, fit to be dyed, polished
- > Easy to assemble, easy tiling, labor-saving
- > 5 color options (teak, gray, beige, wenge, afromosia)





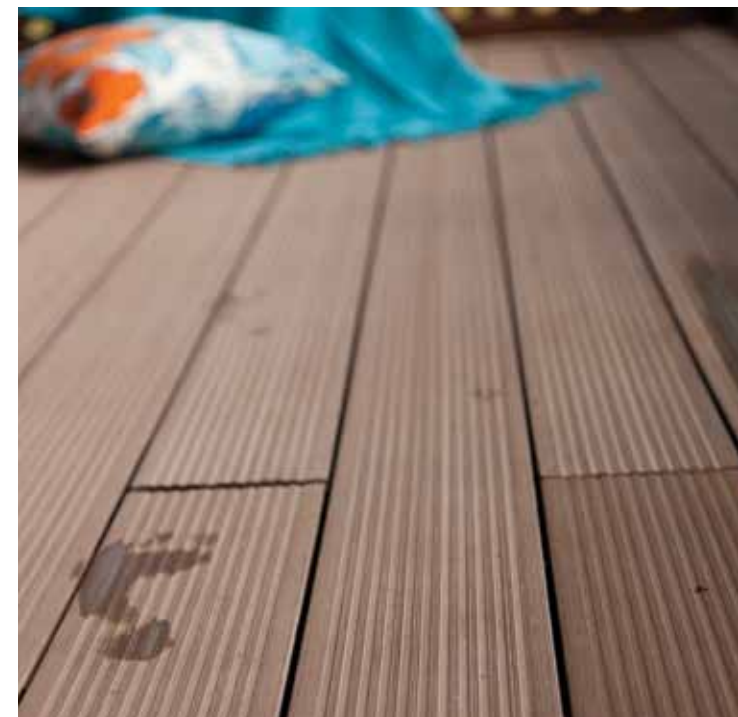


#### APPLICATION AREAS

- > Pools
- > Terraces
- > Beaches
- > Piers
- > Garden paths
- > Promenades
- > Winter gardens
- > Pergolas
- > Outdoor places

#### MECHANICAL FEATURES

24 hours immersing test	: water retention 0.95%
Tensile test	: 414 kg (thickness 4.80 mm)
Bending test	: 31 kg (thickness 4.80 mm)
Compression test	: 2000 kg (thickness 4.80 mm)





# DECK MODELS

## DECK

Details  
Width : 140 mm  
Length : 2800 mm  
Height : 25 mm



Teak



Grey



Beige



New Wenge



New Afromosia



## RAYGEN®

Aluminim Rail Composite Base Application

## MULTI-PURPOSE DECK

Details  
Width : 100 mm  
Length : 2800 mm  
Height : 20 mm



Details  
Width : 80 mm  
Length : 3020 mm  
Height : 15 mm



Teak



Grey



Beige



New Wenge



New Afromosia



Teak



Grey



Beige



New Wenge



New Afromosia

## SIDING PROFILE

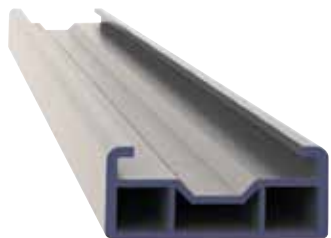
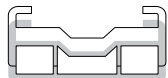
Details  
Width : 145 mm  
Length : 2800 mm  
Height : 14 mm

FLOOR PROFILES

Aluminum Base Profile (Sliding System)

Details

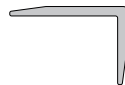
Width : 41 mm  
Length : 3000 mm  
Height : 17 mm



DECK COVERING PROFILES

Details

Width : 40 mm  
Length : 2800 mm  
Height : 60 mm

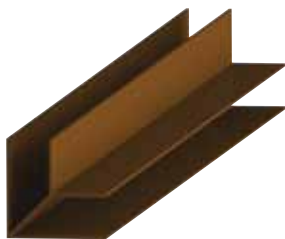


ACCESSORIES

Type H Joint



Inside-Outside Corner



Plastic Connection Clips



Start up & End Clips



90° Corner Joining



Edge Cover

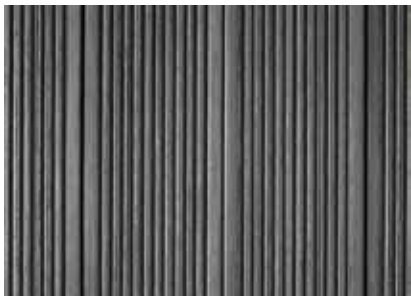


PRODUCTION COLORS

002 Teak



003 Grey



004 Beige



005 Wenge



006 Aframosia





# DECK INSTALLATION GUIDE

• At the beginning of the montage, floor profiles must be fastened with a pin

1 • Floor profiles must be laid with 20 cm interspaces in heavy burdens, 30 cm in mid-weight maximum 40 cm for the walking paths

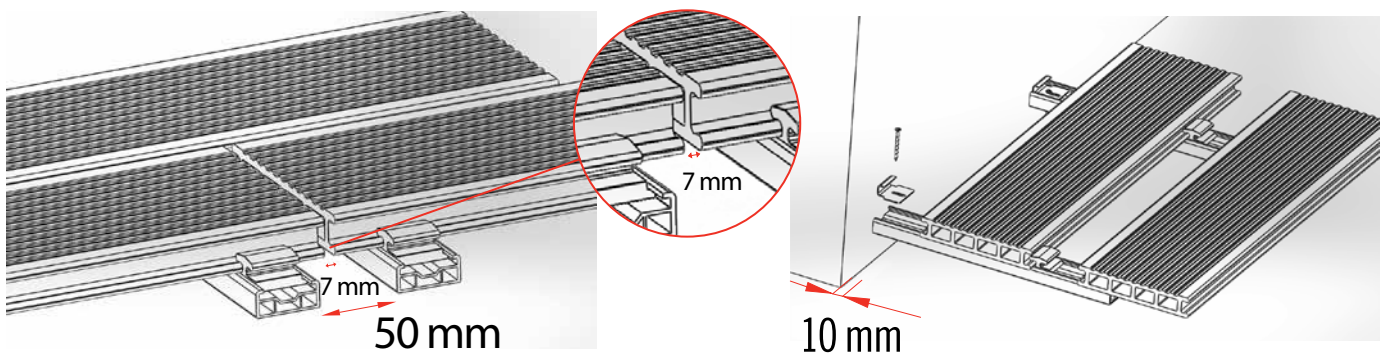
2 • In order to prevent water accumulation on the surface, the floor profiles must be laid with an obliquity of 4 mm/m

3 • In order to enable water disposal, there must be a 20 cm space on the nebs

• During the screwing process, the specified torque of the screwing machine must be at a minimum at the beginning and then it must be gradually increased until the proper value is reached.  
**Warning: Do not ever choose high specified torque which leads to stripping of screws**

• Laying must be applied by leaving a minimum of 10 mm spaces at the beginning and finishing of the montage, and 5 mm space in lateral areas and 7 mm in vertical areas.

• During the montage, together with a kneed connection clip, 3.5 mm screws must be used.  
**Warning: Do not ever use nails**



## SUNDECK User's Manuel

- Montage must be applied in accordance with the guidelines in the installation guide.
- No materials other than fittings belonging to SUNDECK must be used.
- SUNDECK must not come into contact for long periods with salt and water.
- SUNDECK must not be set up in a way that is directly in contact with soil.
- SUNDECK should not be used in places with high temperatures and moisture, such as saunas or steam rooms.
- SUNDECK must not be used for other purposes, or as carrier construction material.
- SUNDECK must be kept in proper conditions.
- SUNDECK should not come into contact with abrasive or colorant chemicals.
- SUNDECK's long term contact with sunlight and water may lead to color change after a point.
- Composite products should not be exposed to impact.
- Its maintenance should only be provided with the cleaning materials and methods proposed by SUNDECK, otherwise only pressurized water must be used.

## Other Conditions and Limitations

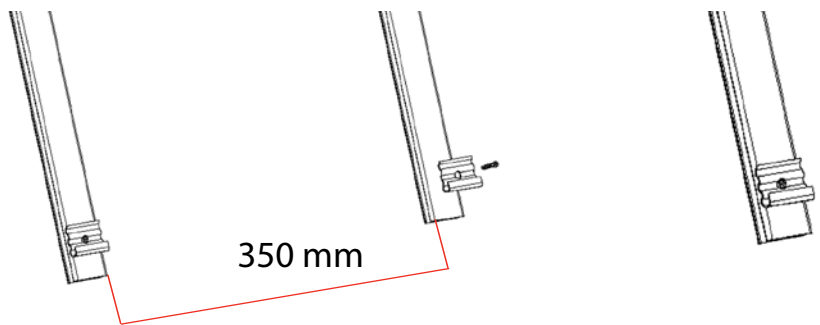
- The methodology of storage, application, installation, usage and maintenance is the sole responsibility of user unless if applied in other way described in this SUNDECK user's manuel.
- In case of any defect caused by raw material and or faulty manufacturing, the final decision, inspection and final defect report can only be made by authorized SUNDECK inspectors
- In case of supersession, there might be colour differences between the preceding and the new deck. SUNDECK reserves the all rights to change or suspend the production of the products without prior notification and this does not provide any additional rights to the user or wholesaler.
- SUNDECK reserved the rights to change the warranty conditions anytime and no other party claims or prove to change any article in these conditions
- General measurement tolerance  $\pm$  % 0,5.

# SIDING INSTALLATION GUIDE

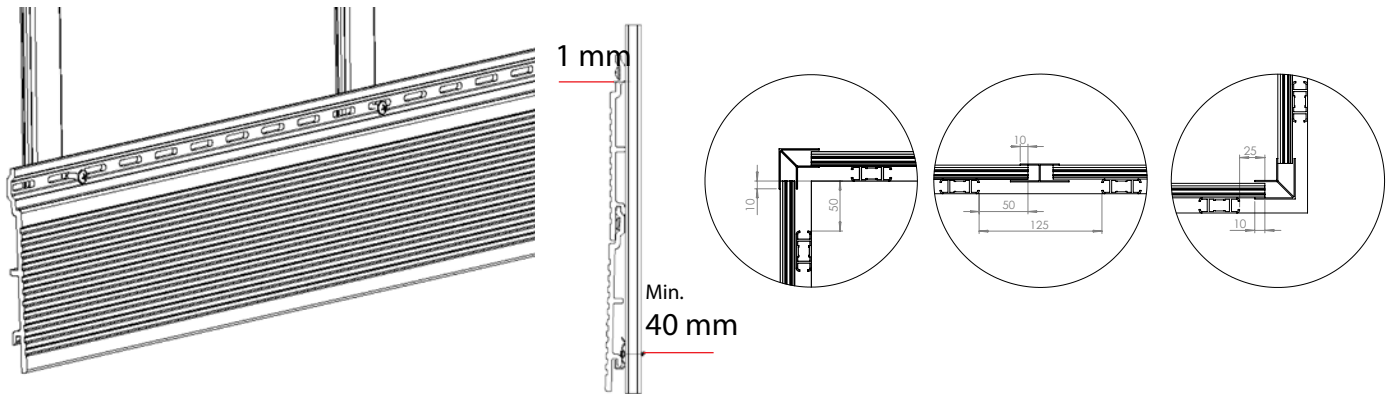
• Aluminum base profiles should be fixed to the floor with fixing plugs at intervals of 35 cm at the beginning of the application.



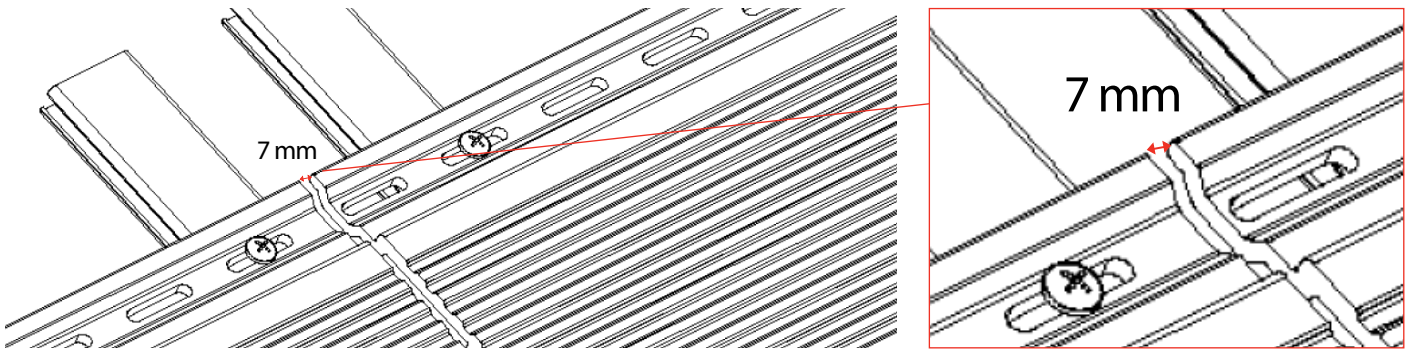
• Siding Profiles should be applied from bottom to top. Base profiles should be applied at minimum 10 mm above the subfloor at intervals of 35 cm. The hole center of Beginning-Ending Clips should be fixed at minimum 40 mm above the base profile.



• After Siding Profile is settled in the Beginning-Ending Clip, Siding Juncture grooves are centered with #4 DIN 968 - Cross Cylinder Head Metal Sheet Shim Screw and screw is placed with 1 mm clearance without tightening.



• Siding application should be laid with 10 mm clearance at beginnings and endings while 7 mm clearance at endings of continuing laying.



• No screw other than nails or grooves should be applied in siding applications.



HOSEKRA  
GROUP

HOSEKRA, d.o.o.  
Kolodvorska Ulica 37e  
2310 Slovenska Bistrica,  
Slovenia

Tel: 02 80 55 120  
Fax: 02 80 55 122  
Gsm: 041 640 990  
Email: [hosekra@siol.net](mailto:hosekra@siol.net)

[www.hosekra-floor.com](http://www.hosekra-floor.com)